















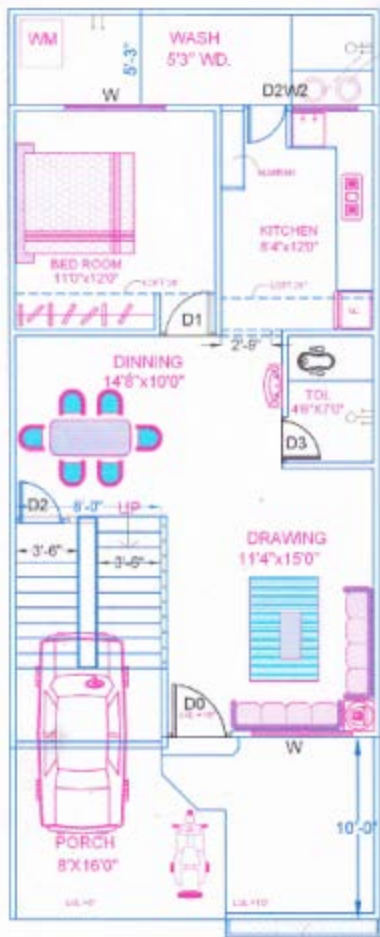






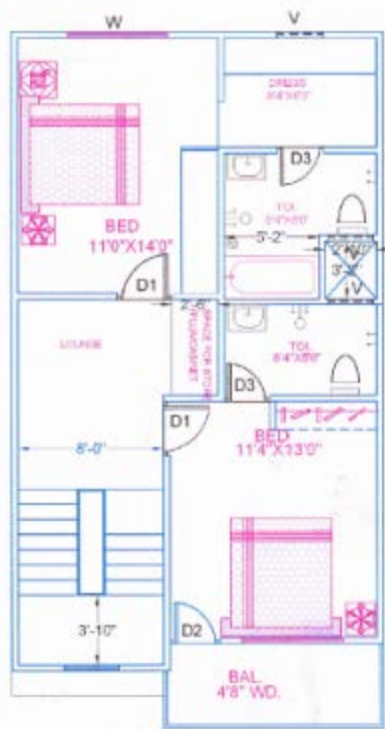
| Particulars            | Details                                                                                          |
|------------------------|--------------------------------------------------------------------------------------------------|
| Living/Dining Flooring | Tiles                                                                                            |
| Bedrooms Flooring      | Tiles                                                                                            |
| Wall Ceiling Finish    | Oil Bound Distemper / Colour Wash                                                                |
| Toilets Wall Finish    | Tiles up to 5' Oil Bound Distemper / Colour Wash                                                 |
| Toilets Flooring       | Tiles                                                                                            |
| Kitchen Flooring       | Tiles                                                                                            |
| Platform               | Marble                                                                                           |
| Kitchen Wall Finish    | Tiles up to 2 feet high above Marble counter & Oil bound distemper / Colour Wash in balance area |
| Others                 | Single Bowl Stainless Steel Sink                                                                 |
| Balcony Flooring       | Tiles                                                                                            |
| Window                 | MS Z-Section & Glass / Alu Steel & Glass                                                         |
| Door Frame / Doors     | Hardwood / M.S / Fiber Door frames with Flush Door / Skin Door / Fiber Door                      |
| Common Area Flooring   | Marble / Pavers                                                                                  |
| Lift Lobby             | Marble / Tiles                                                                                   |
| Chinaware              | Standard Fitting                                                                                 |
| C.P Fittings           | Standard Fitting                                                                                 |
| Electrical             | ISI marked products for wiring, switches and Circuits                                            |
| Security               | Gated Complex                                                                                    |





**GROUND FLOOR PLAN**

20 INCH BELOW PLASTER



**FIRST FLOOR PLAN**

PLASTERED







**Sanjana park**

*The Township Project*